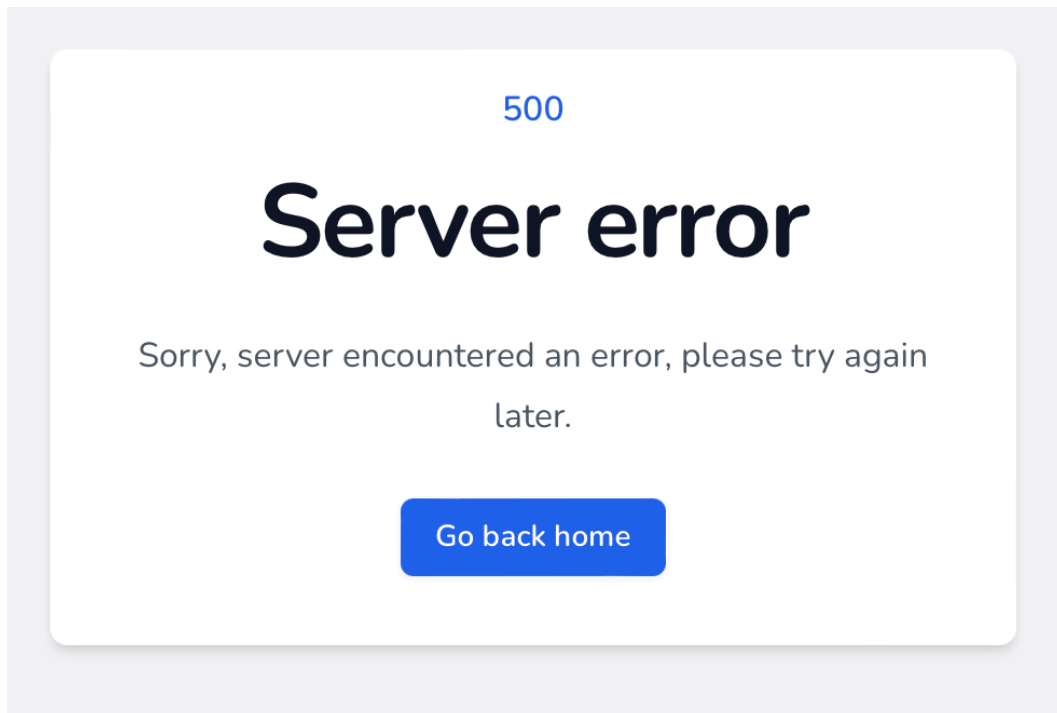


New Installation:

after reinstallation - only display, see attachment - no "Go back home" - nothing!



```
[2024-01-09 14:08:12] production.ERROR: Unsupported cipher or incorrect key length. Supported ciphers are: aes-128-cbc, aes-256-cbc, aes-128-gcm, aes-256-gcm. {"exception":"[object] (RuntimeException(code: 0): Unsupported cipher or incorrect key length. Supported ciphers are: aes-128-cbc, aes-256-cbc, aes-128-gcm, aes-256-gcm. at /www/htdocs/w013223d/volkeswink.de/vendor/laravel/framework/src/Illuminate/Encryption/Encrypter.php:55)
```

```
2024-01-09 14:08:12] production.ERROR: Unsupported cipher or incorrect key length. Supported ciphers are: aes-128-cbc, aes-256-cbc, aes-128-gcm, aes-256-gcm. {"exception":"[object] (RuntimeException(code: 0): Unsupported cipher or incorrect key length. Supported ciphers are: aes-128-cbc, aes-256-cbc, aes-128-gcm, aes-256-gcm. at /www/htdocs/w013223d/volkeswink.de/vendor/laravel/framework/src/Illuminate/Encryption/Encrypter.php:55)
```

```
[2024-01-09 14:08:06] production.ERROR: Unsupported cipher or incorrect key length. Supported ciphers are: aes-128-cbc, aes-256-cbc, aes-128-gcm, aes-256-gcm. {"exception":"[object] (RuntimeException(code: 0): Unsupported cipher or incorrect key length. Supported ciphers are: aes-128-cbc, aes-256-cbc, aes-128-gcm, aes-256-gcm. at /www/htdocs/w013223d/volkeswink.de/vendor/laravel/framework/src/Illuminate/Encryption/Encrypter.php:55)
```

```
2024-01-09 14:08:06] production.ERROR: Unsupported cipher or incorrect key length. Supported ciphers are: aes-128-cbc, aes-256-cbc, aes-128-gcm, aes-256-gcm. {"exception":"[object] (RuntimeException(code: 0): Unsupported cipher or incorrect key
```

length. Supported ciphers are: aes-128-cbc, aes-256-cbc, aes-128-gcm, aes-256-gcm. at /www/htdocs/w013223d/volkeswink.de/vendor/laravel/framework/src/Illuminate/Encryption/Encrypter.php:55)

[2024-01-09 14:10:30] production.ERROR: Unsupported cipher or incorrect key length. Supported ciphers are: aes-128-cbc, aes-256-cbc, aes-128-gcm, aes-256-gcm. {"exception":"[object] (RuntimeException(code: 0): Unsupported cipher or incorrect key length. Supported ciphers are: aes-128-cbc, aes-256-cbc, aes-128-gcm, aes-256-gcm. at /www/htdocs/w013223d/volkeswink.de/vendor/laravel/framework/src/Illuminate/Encryption/Encrypter.php:55)

2024-01-09 14:10:30] production.ERROR: Unsupported cipher or incorrect key length. Supported ciphers are: aes-128-cbc, aes-256-cbc, aes-128-gcm, aes-256-gcm. {"exception":"[object] (RuntimeException(code: 0): Unsupported cipher or incorrect key length. Supported ciphers are: aes-128-cbc, aes-256-cbc, aes-128-gcm, aes-256-gcm. at /www/htdocs/w013223d/volkeswink.de/vendor/laravel/framework/src/Illuminate/Encryption/Encrypter.php:55)

[2024-01-09 14:10:32] production.ERROR: Unsupported cipher or incorrect key length. Supported ciphers are: aes-128-cbc, aes-256-cbc, aes-128-gcm, aes-256-gcm. {"exception":"[object] (RuntimeException(code: 0): Unsupported cipher or incorrect key length. Supported ciphers are: aes-128-cbc, aes-256-cbc, aes-128-gcm, aes-256-gcm. at /www/htdocs/w013223d/volkeswink.de/vendor/laravel/framework/src/Illuminate/Encryption/Encrypter.php:55)

[2024-01-09 14:10:32] production.ERROR: Unsupported cipher or incorrect key length. Supported ciphers are: aes-128-cbc, aes-256-cbc, aes-128-gcm, aes-256-gcm. {"exception":"[object] (RuntimeException(code: 0): Unsupported cipher or incorrect key length. Supported ciphers are: aes-128-cbc, aes-256-cbc, aes-128-gcm, aes-256-gcm. at /www/htdocs/w013223d/volkeswink.de/vendor/laravel/framework/src/Illuminate/Encryption/Encrypter.php:55)